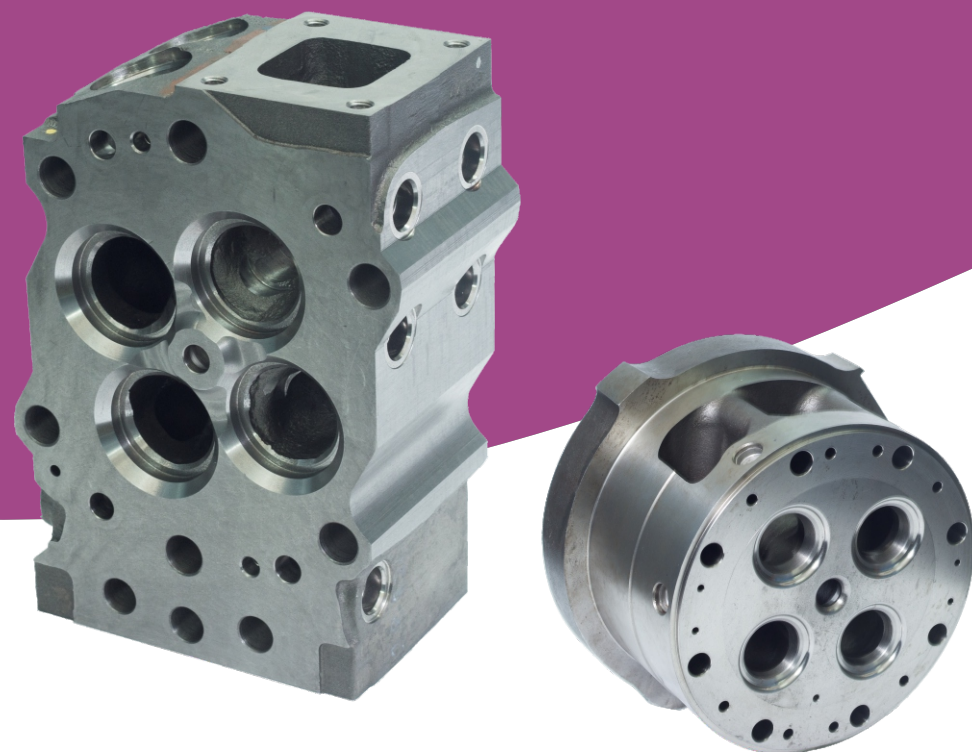


CASTING TO THE
MOST RELEVANT
SPECIFICATIONS.



First name in Cylinder Head

Saroj Castings Pvt. Ltd.

THE FOUNDER



Origins of foundry business are deeply rooted in this fertile land from the colonial times. But it has attained the world-class stature in true sense, in the last four decades, because of the legendry role played by Shri.

P. S. alias 'Bapu' Jadhav. 'Bapu' as he is affectionately known in the business fraternity, is a humble, down-to-earth man. With exceptional talent & inherent skills in 'moulding', Bapu has created miracles in the Foundry-world. A man with Midas touch, a man with far reaching business vision, a man – showered with numerous accolades, 'Bapu' is known for his multiple layers of personality.



Shri. Bapu Saheb - The Legend

About Saroj Castings Pvt. Ltd.

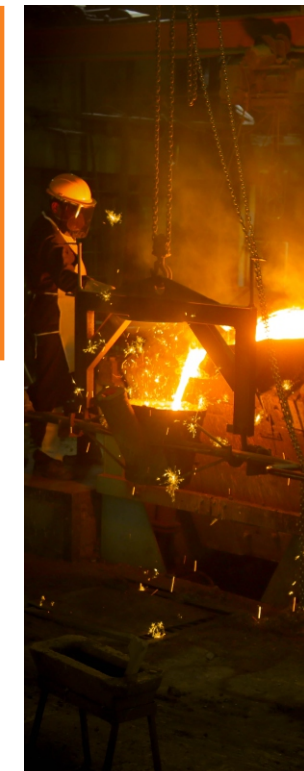
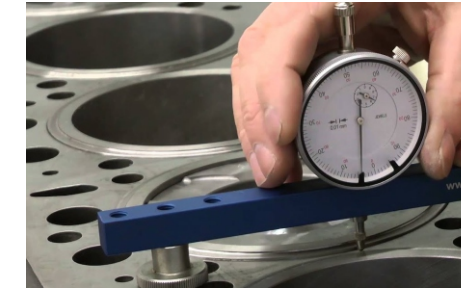
Cylinder Head Castings manufactured at Saroj Castings are exclusively produced for Diesel Engines, with the gamut of applications like Marine, Automobile, Power generation for Compressors & so on. This component plays a pivotal role in the performance, reliability and life cycle of the main product. It requires stringent quality norms, accuracy in pattern design, pattern manufacturing & moulding. Apart from Greensand & Nobake, the manufacturing of Cylinder Head Castings predominantly involves shell core & shell moulding process. This process facilitates high accuracy & minimal machining allowance. The surface finish, contours, pockets, are so accurately maintained that the casting can even be taken for machining process, just after initial fettling & shot-blasting. With sustained focus on R&D, Saroj Castings have enhanced Quality standards of Cylinder Head Castings to unconquerable heights.

Consistent efforts are on to maintain the quality standards as per IS & International standards. Going beyond these standards, the organization always strives to meet the customers' specific requirements.

The Leader & His Team

Saroj Castings, under the leadership of AJIT JADHAV is looking forward to new horizons. Bestowed with legacy & vision of his father, Ajit possesses similar degree of rectitude. Ajit, brimming with youthful energy and dreams of future has equally energetic & talented team to support him. He has a simple demeanor alike his father and big dreams to conquer new horizons.

The team formulated & groomed in the culture of quality & commitment, is focused & poised to welcome the new world & new challenges with open arms. It is consistently bringing in improvements in every sphere of business, be it Manufacturing, Quality Assurance or HR. With Ajit – a livewire personality at the helm, his young team will always remain resourceful & vibrant.



FOUNDRY SECTION



Foundry Capacities and Facilities :-

- ✱ We manufacture gray iron cylinder heads from 8 Kg to 100 Kg. in as cast as well as fully machined condition, from single to Six cylinder.
- ✱ We meet the requirements of OEMs like Diesel Engines, Gasoline Engines, Marine Engines, Generator sets, Power tiller etc.
- ✱ Total Employee strength – 200
- ✱ Total Area in Sq. Meters – 11,000
- ✱ Monthly melting capacity – 450 Metric Ton.
- ✱ Pattern Shop – Tooling Maintenance and Management.
- ✱ Shell molding machines (Susha make). Max. Mold size – 650 * 400 mm
- ✱ Induction Furnace - 450 KW, 850 KG – Make : Electrotherm India Ltd. Medium frequency Induction Furnace.
- ✱ Spectrometer – Thermo fisher (ARL, Sweden).
- ✱ Facility to check radioactive contamination.- Detector.
- ✱ Handling system – Monorail system.
- ✱ Core & Mould coatings/Applications – water based coats - Foseco, Acme. – Spraying, brushing & dipping.
- ✱ Full-fledged lab, equipped with Microscope & sand-testing facilities – Hot tensile strength, gas evaluation, AFS number & Pell back test.
- ✱ Tensile Testing machine , Hardness Testing machine.
- ✱ Stress Relieving Furnaces with data logger. – Total capacity- 15 M.T./ day. (As per C.S.R.)
- ✱ Fettling & Shot-blasting shop – Hand grinders/Shot blasting machine.



COMPANY PROFILE



Name - Saroj Castings Pvt. Ltd.

JV / License - N.A.

Incorporated - 1964.

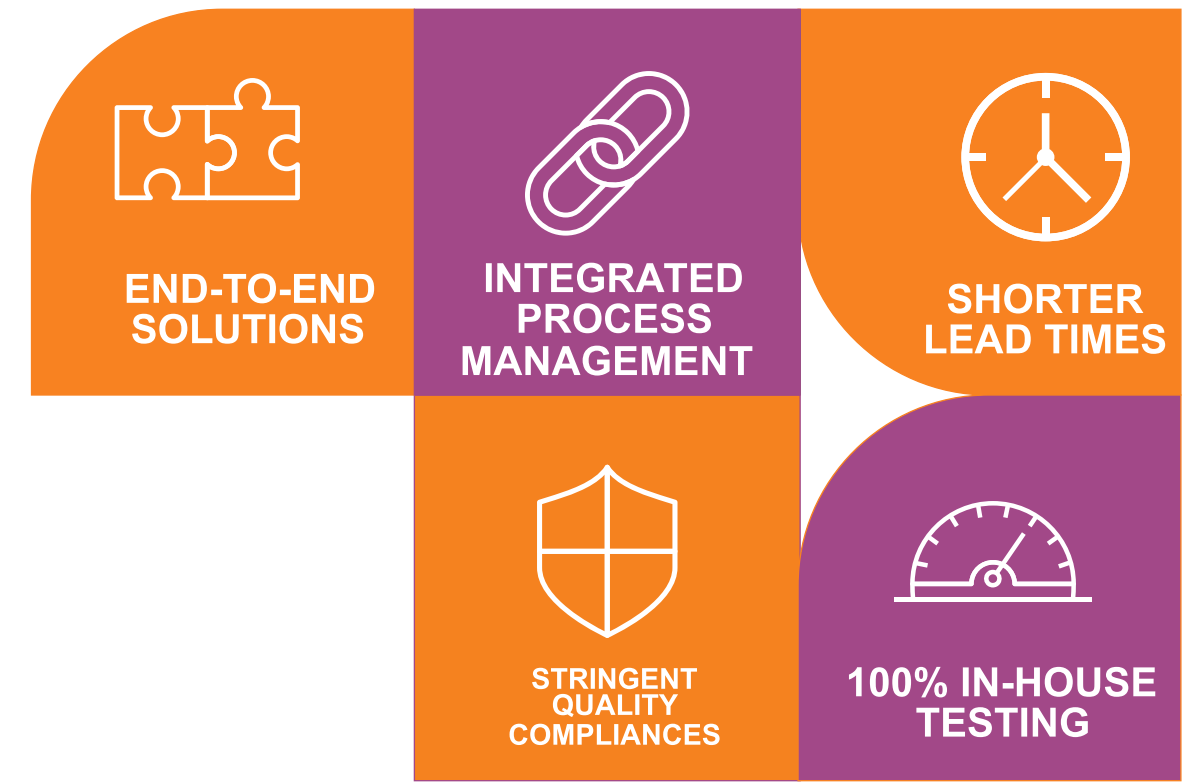
(Saroj castings formed as a separate group in 2011)

M.D. / CEO - Mr. Ajit Jadhav.

Product Line - Shell Molding Line,
state of art machine shop

Certification Status - ISO 9001 – 2015.

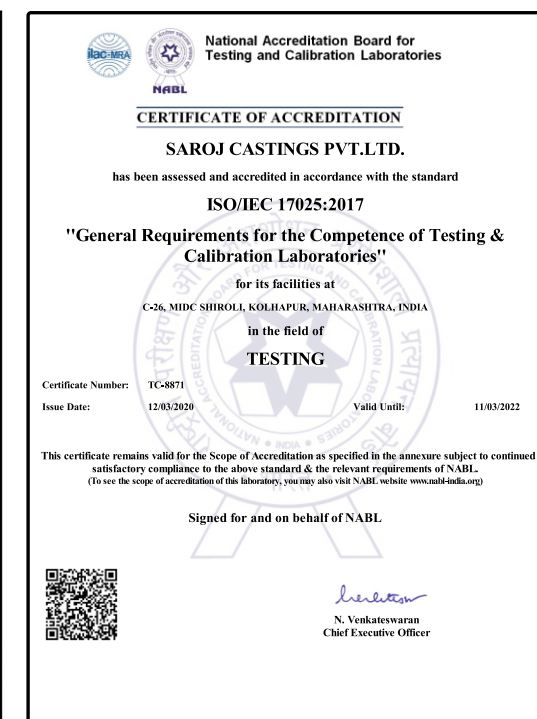
Certification with Indian Register of Shipping.



ISO 9001- 2015 Certificate



IRS Certificate



NABL Certificate

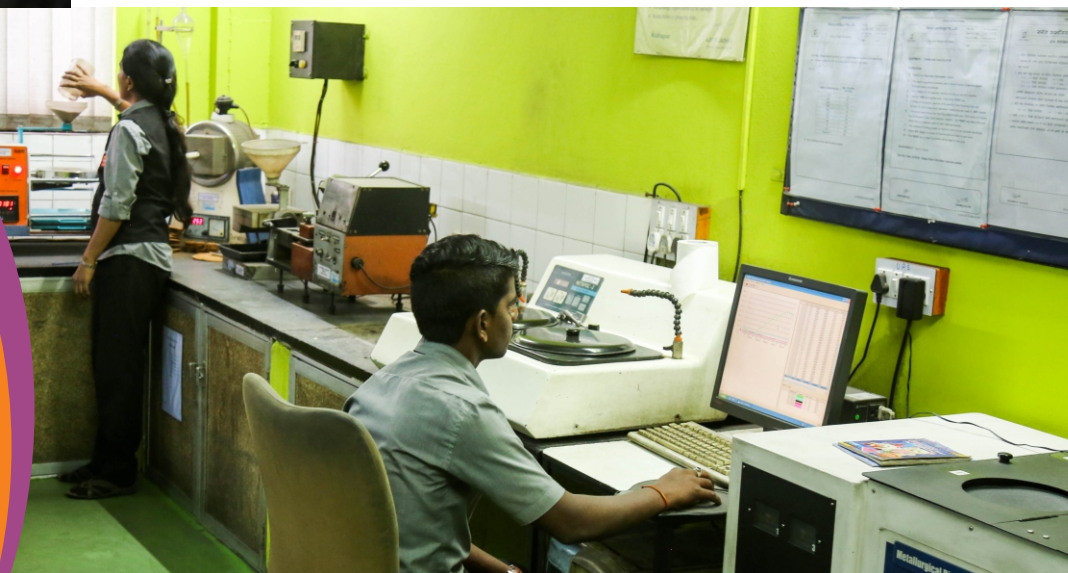
CORE SHOP



Core Dressing & Mould Assembly Section

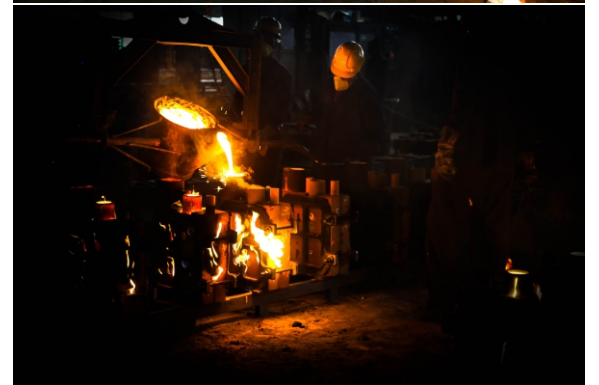


LABORATORY

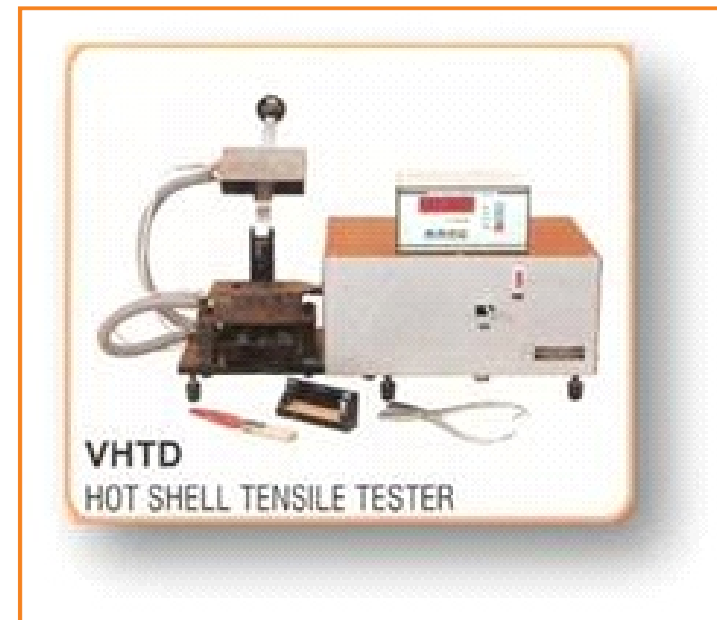


NABL Audit Completed in Jan.2020

MELTING & POURING SECTION



QUALITY ASSURANCE – FOUNDRY.



Hot Shell Tensile Tester



Endoscope



Microscope



Tensile Testing Machine



Hardness Testing Machine



Radiation Detector



Spectrometer

DISA Shot Blasting Machine – VP18- 1 ton



Nozzle Shot Blasting Machine



MACHINING SECTION



Machine Shop Capacities and Facilities :-

- ✱ Centralized coolant system - 20 Micron filtration (For thru coolant.)
- ✱ Co-ordinate Measuring Machine (CMM)-Carl Zeiss Make- ConturaG2 Vast XXT RDS. Measuring Range - 700 x 1000 x 600mm.
- ✱ Digital Height master -Trimos Make (Measuring range 0-600mm)
- ✱ Tool Presetter - Zoller Make – (320mm Tool Dia. Checking possible)
- ✱ Mazak HMC –BT 50, 500x500mm pallet size.
- ✱ VMC-BT-50 - 1300 x 600 mm Table size, BT 40 with 2 pallet changer.
- ✱ Air Plug Gauges for precise measurements/process capability.
- ✱ Special Purpose Machines (SPM). :-
 - ✱ 1). Ex. Long drilling up to 450mm.
 - ✱ 2). Multispindle drilling up to 16 holes in one stroke.
 - ✱ 3). Ex. Long drilling + angular hole drilling SPMs.
- ✱ Special Purpose pneumatic leak testing Machine with 0.001 P.S.I. accuracy with auto punch for okay parts.
- ✱ Special Purpose Washing Machine – Working coolant Pressure 10 Bar Cleanliness Measure :- 35 mg. Max. Millipore.



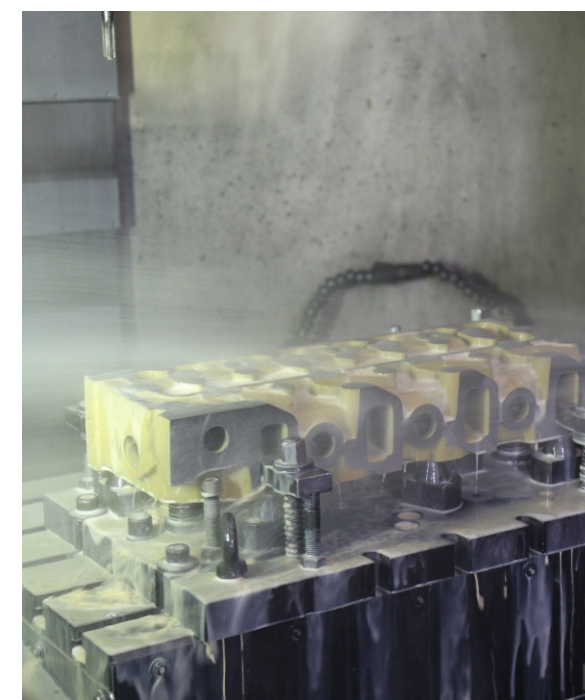


Centralized Coolant System Plant



- ❖ Eco - Friendly.
- ❖ Improved Shop Cleanliness.
- ❖ Reduction in labor cost.

MACHINING SECTION



MACHINING SECTION



Washing machine (SPM)
Millipore – 35 mg. Max.



Leak Testing Machine
Accuracy :- 0.0009 bar.



Coordinate Measuring Machine(C.M.M.)
Carl Zeiss Make



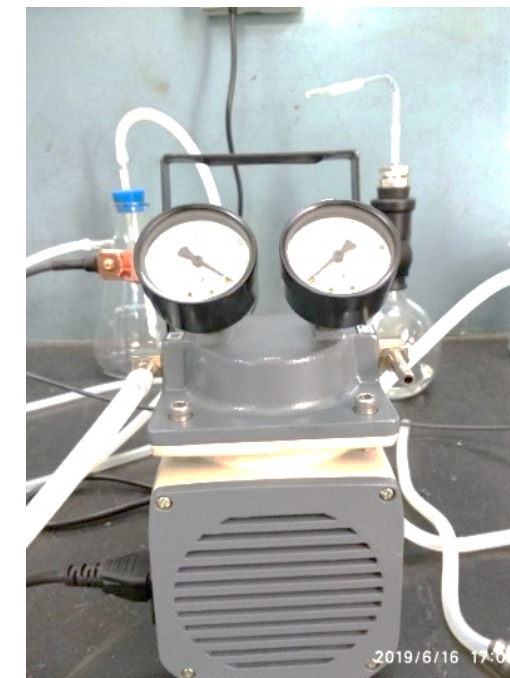
CNC Tool Presetter – Zoller Make

MILLIPORE FACILITY

With Partial Analysis



- ✱ In house Millipore Facility from – “MERCK MILLIPORE INDIA LTD.”
- ✱ Millipore testing is a very popular method of measuring and verifying part cleanliness.



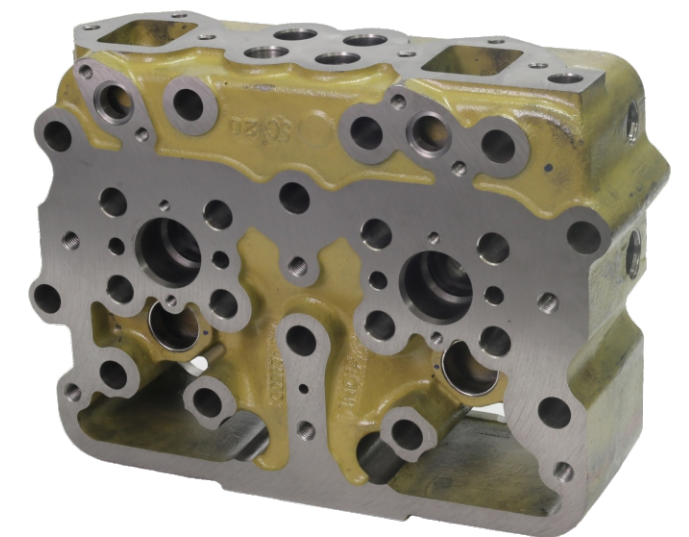
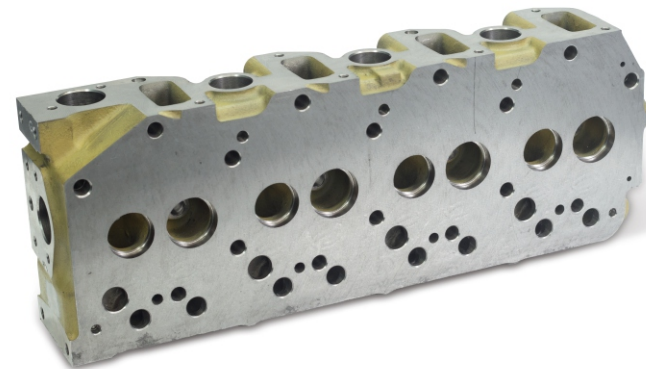
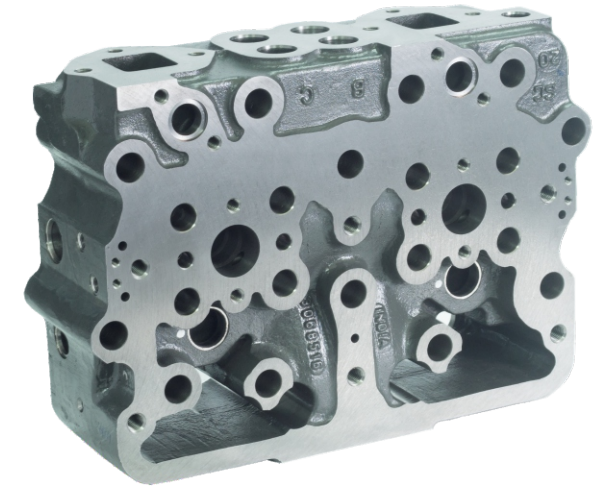
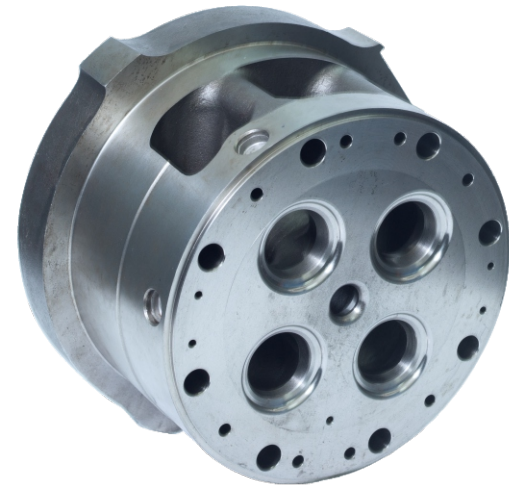
PROCESS CAPABILITY MONITORING



- ✱ Use of Minitab for data analysis for process capability on regular basis.
- ✱ Implementation of Q Das software for sharing real time SPC with customers,
- ✱ Online extraction of data to direct Customers cockpit.



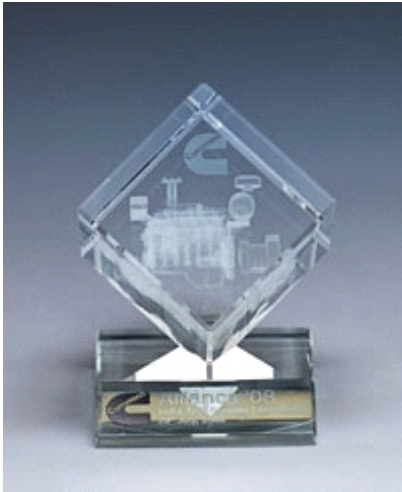
PRODUCTS



AWARDS & RECOGNITIONS



India Direct Supplier
Diversity leadership Award 2018



BEST QUALITY PERFORMANCE
2018



GENDER DIVERSITY INITIATIVE



As Mrs. Chhaya Jadahv says Women are no longer a rarity in the automotive and ancillaries manufacturing industry, be it the shop floor or that corner office. There's no doubting the evolving mindset on the congruity of women amid machinery. She has spent the past few years analyzing and empowering women.

#womensupportingwomen



Vision :

"Creating an inclusive environment by unleashing the potential of diverse & dependable workforce, hence creating social awareness and cultural change."

Mission :

"Increasing the diversity workforce by 20% till end of 2020 without affecting the organization goals – Achieving Customer Satisfaction in terms of Quality, Cost and Delivery."



Wind power has emerged as the biggest renewable energy source in the world. Saroj Castings has set up 1.25 MW wind mill near Dhule in Maharashtra, India. It shows our commitment towards Clean, Pollution Free and Green Energy Production.



Windmill

Nature has endowed India with huge water resources. Although these huge water resources notwithstanding, we are facing a water crisis across the country. To carter this need, as a small contribution towards global green initiative. We, Saroj Castings have initiated rain water harvesting in our company premises.



Rain Water Harvesting

**THANK
YOU!**



Saroj Castings Pvt. Ltd.

First name in Cylinder Head